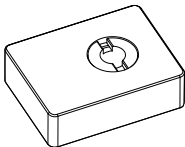


OSMO

1/4" and 3/8" Mounting Adapter for Universal Mount

Quick Start Guide

V1.0 2016.02



Disclaimer and Warning

Congratulations on purchasing your new DJI product. The information in this document affects your safety and your legal rights and responsibilities. Read this entire document carefully to ensure proper configuration before use. Failure to read and follow instructions and warnings in this document may result in serious injury to yourself or others, damage to your DJI product, or damage to other objects in the vicinity. This document and all other collateral documents are subject to change at the sole discretion of DJI. For up-to-date product information, visit <http://www.dji.com> and click on the product page for this product.

By using this product, you hereby signify that you have read this disclaimer and warning carefully and that you understand and agree to abide by the terms and conditions herein. You agree that you are solely responsible for your own conduct while using this product, and for any consequences thereof. You agree to use this product only for purposes that are proper and in accordance with all applicable laws, rules, and

regulations, and all terms, precautions, practices, policies and guidelines DJI has made and may make available.

DJI accepts no liability for damage, injury or any legal responsibility incurred directly or indirectly from the use of this product. The user shall observe safe and lawful practices including, but not limited to, those set forth in this document.

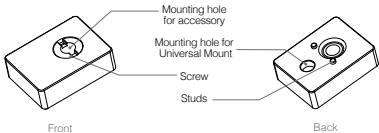
Introduction

The Osmo 1/4" and 3/8" Mounting Adapter is designed specifically for the Universal Mount. It is compatible with equipment fitted with a 1/4" or 3/8" thread, such as a tripod.

Specifications

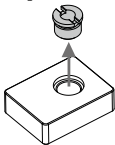
Dimensions: 30 mm x 23 mm x 9 mm

Weight: 16.5 g



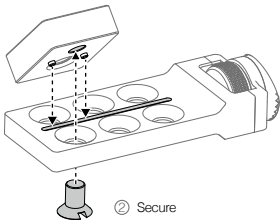
Installation

1. If you want to attach an accessory with a $3/8"$ thread, remove the screw in the mounting hole.



2. Attach the Mounting Adapter to the Universal Mount.
Align the studs with the narrow slot and secure with the 1/4" screw on the Universal Mount.

① Align



3. Make sure the Mounting Adapter is secure before attaching your accessory.

